

Improving information flow in the supply chain

EXTENDED USE MAPS – A REGISTRANT'S VIEW

Dr. Erika Kunz
Global Product Stewardship
Global Registration and Evaluation of Chemicals
05.04.2016

what is precious to you?



Table of Contents

- Clariant at a Glance
- The CSR/ES Roadmap
- Communication on safe use
- Use maps – the template
- SWEDs, SPERCs, SCEDs
- Benefit of use maps
- Next steps

Clariant at a Glance

A GLOBALLY LEADING COMPANY IN SPECIALTY CHEMICALS



5 807

Sales 2015 (CHF m)
from continuing operations

227

Net result 2015 (CHF m)
from continuing operations

4

Business Areas

853

EBITDA 2015 (CHF m)
before exceptionals

14.7%

EBITDA margin 2015
before exceptionals

110 in **53**

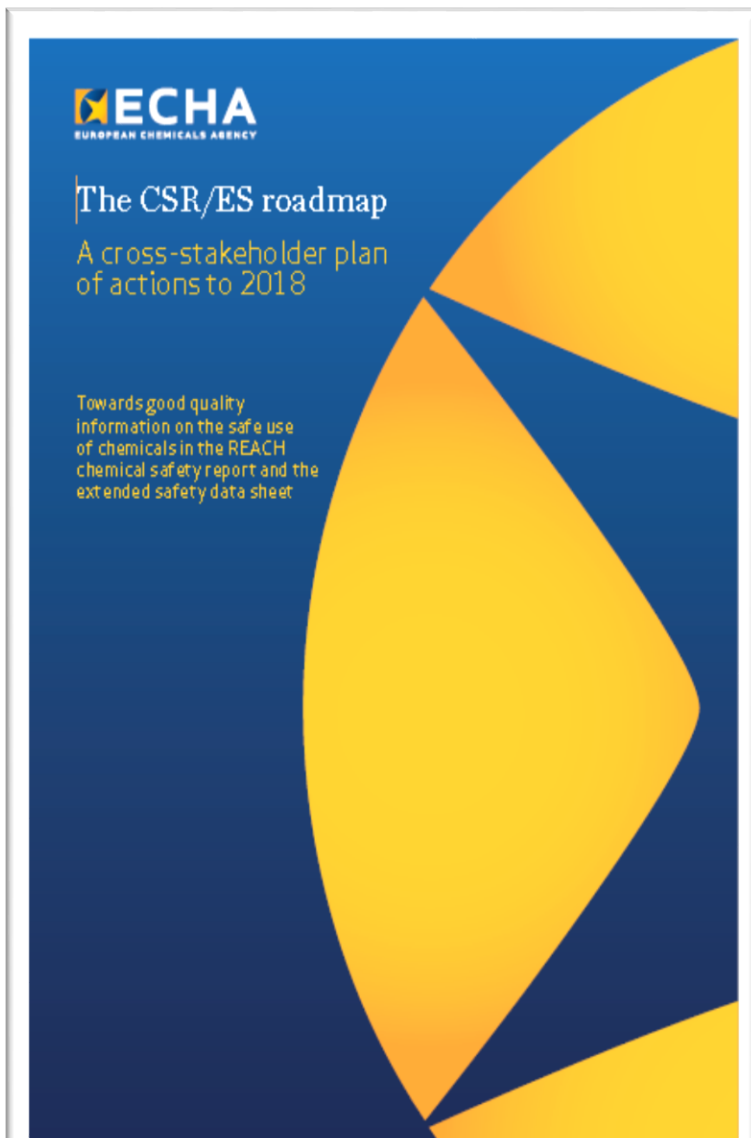
companies countries

17 213

Employees 2015

The CSR/ES Roadmap

CSR/ES Roadmap



Roadmap towards good quality information on the safe use of chemicals



Developing a common understanding on the purpose and use of the information in the exposure scenarios.



Developing efficient means to generate the information needed for a chemical safety assessment.



Developing the IT tools for effective processing and communication of safety information.

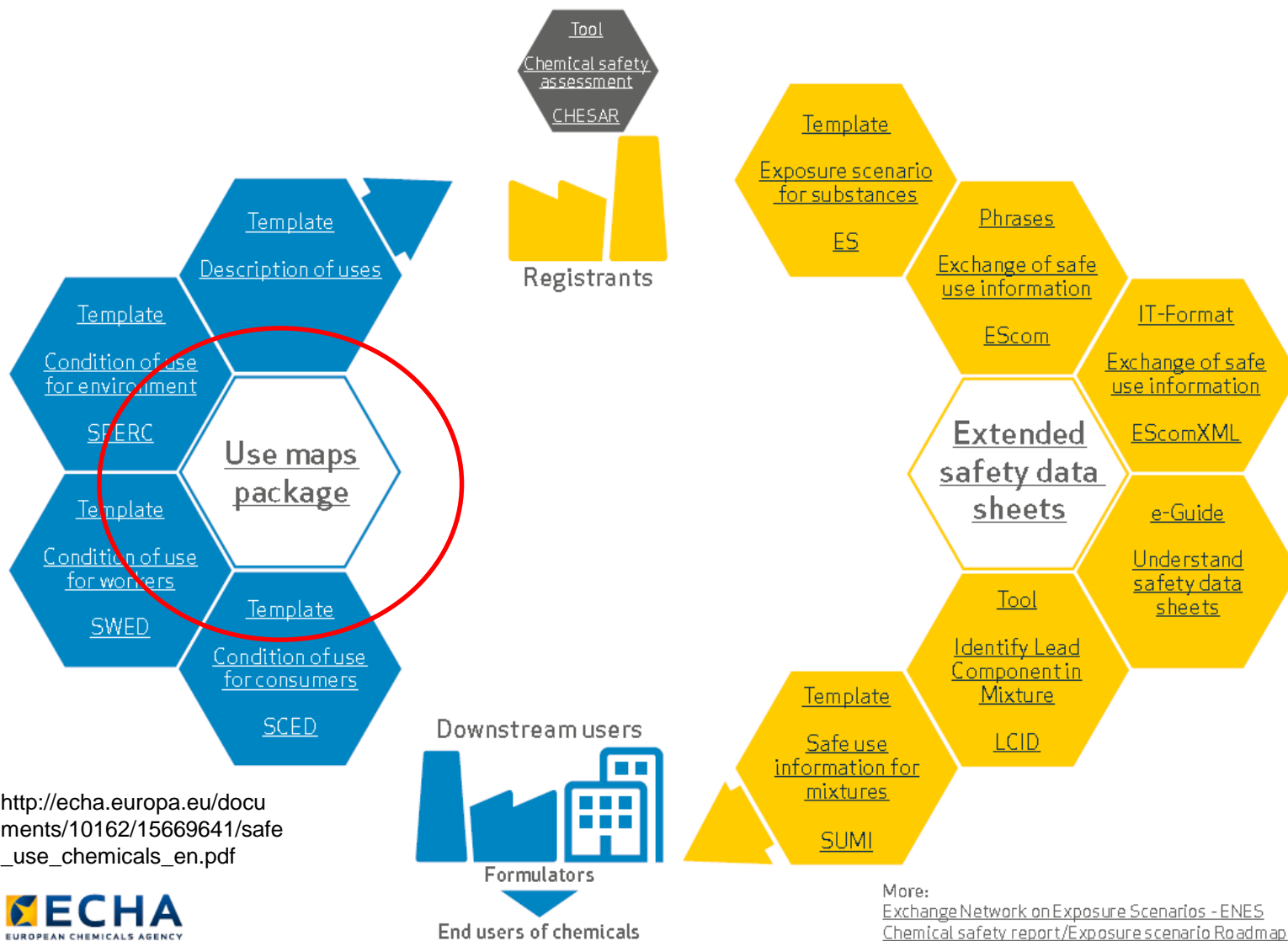


Improving the way formulators can utilise exposure scenarios and communicate safety measures for mixtures.



Improving communication of safety information to companies and professionals that use chemicals in their products or work.

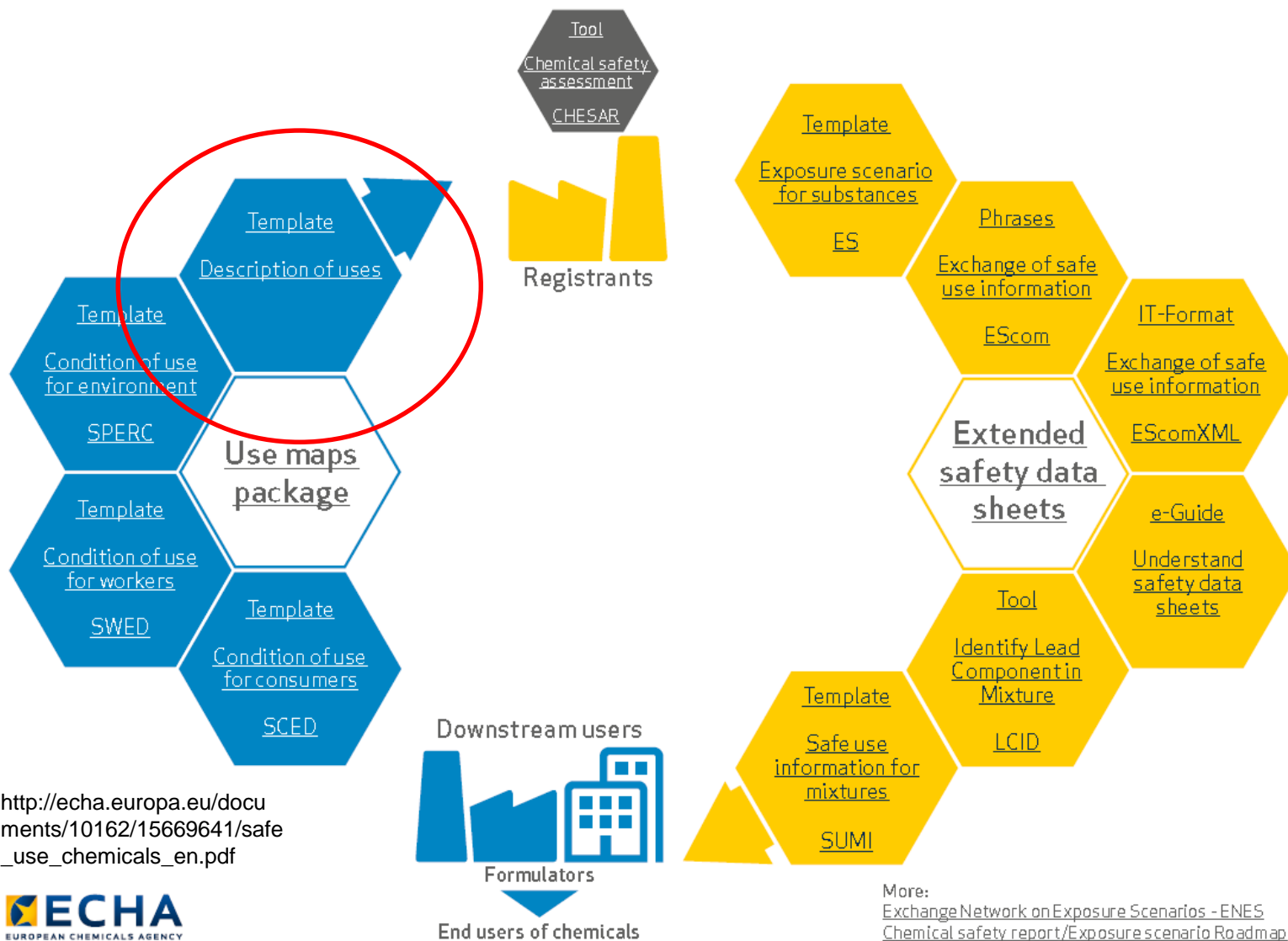
Improving communication on the safe use of chemicals



Use Maps are...

- one possible vehicle to improve communication as they are:
 - a straightforward voluntary communication tool for harmonized and structured generic information on the use of chemicals
 - useful to carry out exposure assessments for the CSA and for exposure scenarios received as an annex of the Safety Data Sheet
 - using a specific template
 - using the recommended standard phrases in the ECom
 - to be filled in mainly by downstream user sector associations

Improving communication on the safe use of chemicals



The new template – basic structure

Use identification and general description:

- Life Cycle Stage code
- Use name
- ECom standard phrase code(s) for use name
- Further description of use
- SU, PC, AC
- ES short title for communication
- This use leads to subsequent service life (Y/N)
- Reference to subsequent service life use and relevant substances (if Y in previous column)

Link activities to exposure assessment inputs

- Contributing activity (CA) type
- CA name
- ECom standard phrase code(s) for CA name
- CA descriptor
- Exposure assessment input code for this CA - SWED, SCED, SPERC

Additional information (optional)

Generic composition by technical functions; maximum concentration per technical function; tonnage information; other

Example of an extended use map

Use maps template - Last updated: January 2016
 Sector Name: sector Date:
 This sheet contains some examples for illustration purposes. The selection of

Use identification and general description					Use name	ESCom standard phrase code(s) for use name	Further description of use	Sectors of use (SU)	Product categories (PC)	Article categories (AC)	ES short title for communication	This use leads to subsequent service life (Y)	Reference to subsequent service life use and relevant substances (if Y in previous column)	
Use code	Link to entry in previous use maps	Life Cycle Stage	Life Cycle Stage code	Use name	Use of vehicle cleaning product	1133170858	Spraying and rinsing of cleaning product at car manufacturing lines (largely automated process - mainly open - ambient temperature)	SU17	PC35		Use at industrial sites; Washing and cleaning products (PC35); General manufacturing, e.g. machinery, equipment, vehicles, other transport equipment (SU17)	no	n/a	
sector_IS_001_v1	n/a	Use at industrial sites	IS	Use of vehicle cleaning product										
sector_PW_001_v1	n/a	Widespread use by professional workers	PW	Professional use of general cleaning products										
	spraying and wiping using long-handle tool.						Washing and cleaning products (PC35)			Workers	Wiping	13322455	PROC10 - sector_SWED_10(i_III)v1	- Solvent: 15% - Base/acid: 20% - Builder: 24% - Hydrotope: 10% - Bleach: 10% - Perfumes: 2% - Other Additives: 2%
										Environment	Indoor use - solvent-borne or water-borne products;	13322021	ERC8a - V sector_SPERC_8a a1.v1	Indicative volume of cleaning products marketed for professional use in the EU

<http://echa.europa.eu/csr-es-roadmap/use-maps?panel=sperc#sperc>

Example of an extended use map

Link activities to exposure assessment inputs

Use maps template - Last updated: January 2016
 Sector Name: sector Date: _____
 This sheet contains some examples for illustration purposes. The selection of u

Use identification and general description					Contributing activity (CA) type	CA name	ESCom standard phrase code(s) for CA name	CA descriptor	Exposure assessment input code for this CA	Assessment input for this CA	Additional information (optional)
Use code	Link to entry in previous use maps	Life Cycle Stage	Life Cycle Stage code	Use name							
sector_IS_001_v1	n/a	Use at industrial sites	IS	Use of vehicle cleaning product	Workers	Transfer of products (manual coupling/decoupling)	13317015	PROC8b -	sector_SWED_8b(i_I_II)v1	_8b(i_I_II)v1	Generic composition by technical functions; maximum concentration per technical function; tonnage information; other
					Workers	Spraying and rinsing of a diluted cleaning product (automated process; open system)	0503; 111	PROC7 - I	sector_SWED_7(i_I_II)v1	_7(i_I_II)v1	
										_4a1.v1	
sector_PW_001_v1	n/a	Widespread use by professional workers	PW	Professional use of general cleaning products	Environment	Indoor use - water-based washing of large articles - Automated process	627;1013	ERC4 - Us	sector_SPERC_4 a1.v1	_11(i_I_III)v1	Maximum concentrations of substances in this product : - Surfactant: 20% - Polymeric: 20% - Solvent: 15% - Base/acid: 20% - Builder: 24% - Hydrotope: 10% - Bleach: 10% - Perfumes: 2% - Other Additives: 2%
										_10(i_I_III)v1	Indicative volume of cleaning products marketed for professional use in the EU
										_8a a1.v1	

<http://echa.europa.eu/csr-es-roadmap/use-maps?panel=sperc#sperc>

Example of an extended use map

Additional information (optional)

Use maps template - Last updated: January 2016

Sector Name: sector Date: 27.01.2016

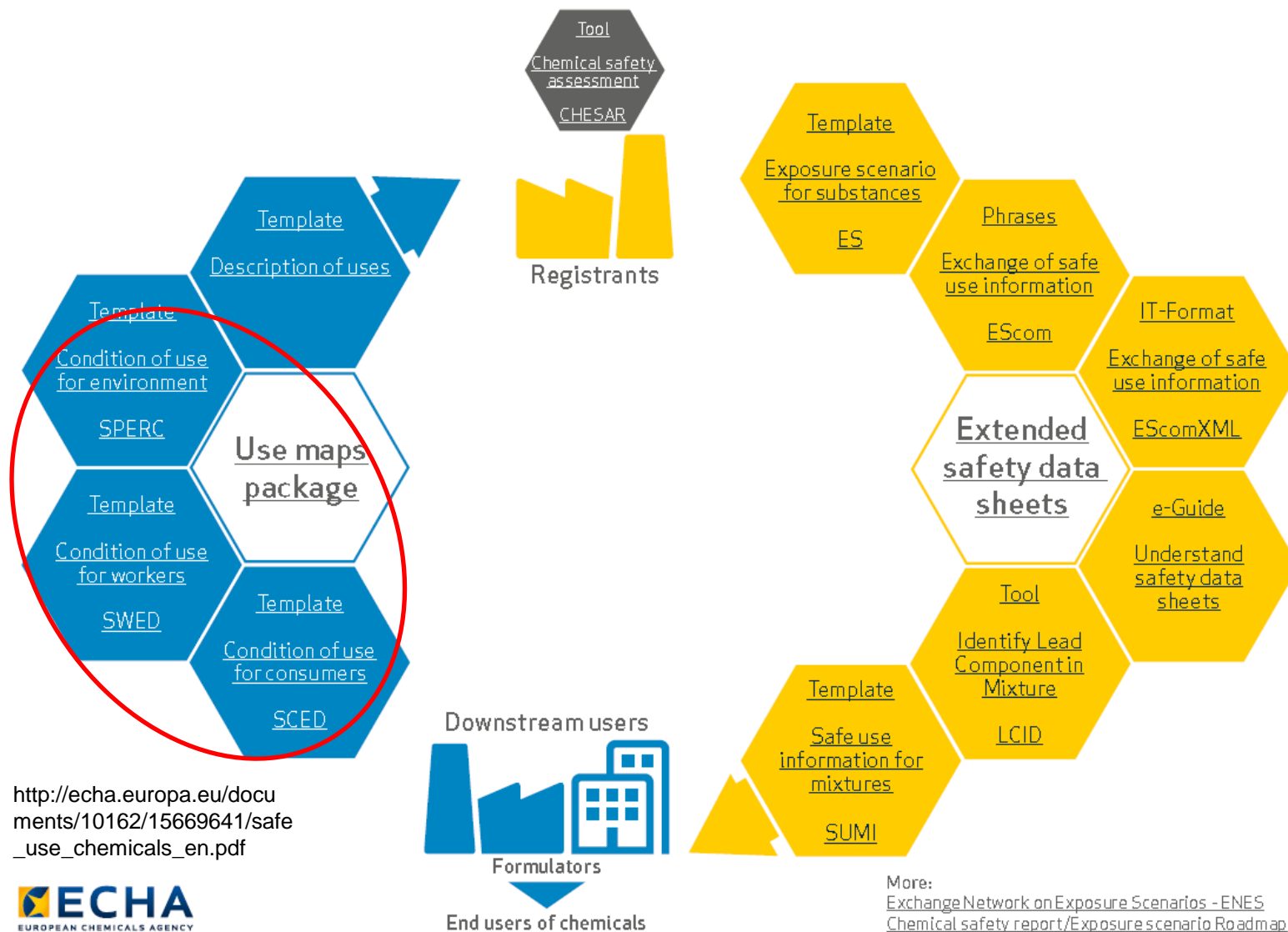
This sheet contains some examples for illustration purposes. The selection of use descriptors and ECom phrases should not be understood as recommended for all sectors. The references to use codes and exposure assessment input c

Use identification and general description												Link activities to exposure assessment		
Use code	Link to entry in previous use maps	Life Cycle Stage	Life Cycle Stage code	Use name	ECom standard phrase code(s) for use name	Further description of use	Sectors of use (SU)	Product categories (PC)	Article categories (AC)	ES short title for communication	This use leads to subsequent service life use	Reference to subsequent service life use and relevant substances (if Y in previous column)	Contributing activity (CA) type	CA name
sector_IS_001_v1	n/a	Use at industrial sites	IS	Use of vehicle cleaning product	1133170858	Spraying and rinsing of cleaning product at car manufacturing lines (largely automated process - mainly open - ambient temperature)	SU17	PC35		Use at industrial sites; Washing and cleaning products (PC35); General manufacturing, e.g. machinery, equipment, vehicles, other transport equipment (SU17)	no	n/a	Workers	Transfer of products (manual coupling/decoupling)
													Workers	Spraying and rinsing of a diluted cleaning product (automated process; open system)
													Environment	Indoor use - water-based washing of large articles - Automated process
sector_PW_001_v1	n/a	Widespread use by professional workers	PW	Professional use of general cleaning products	30602;11133	Regular cleaning of equipment. Manual spraying and wiping using long-handle tool.	various	PC35		Widespread use by professional workers; Washing and cleaning products (PC35)	no	n/a	Workers	Manual spraying
													Workers	Wiping
													Environment	Indoor use - solvent-borne or water-borne products;

Generic composition by technical functions; maximum concentration per technical function; tonnage information; other

<http://echa.europa.eu/csr-es-roadmap/use-maps?panel=sperc#sperc>

Improving communication on the safe use of chemicals



SPERCs, SWEDs, SCEDs describe operational (OC) conditions and risk management measures (RMMs)

- SPERCs describe OCs and RMMs and the corresponding release factors to water, air, soil and waste.
- SWEDs describe OCs and RMMs for workers. They may be used as input to exposure assessments.
- SCEDs describe conditions of use for consumer products. They may be used as input to exposure assessments.
- SPERCs, SWEDs, SCEDs include standard phrases for effective registrant DU communication.

Benefit of use maps: they are a good option to inform about the uses of substances in the supply chain

- They are an effective way to get up-to-date information on uses from downstream users and distributors
- The information they give is representative of a sector
- They help downstream users to make sure their typical uses are covered in the registration dossier of a substance
- They provide structured comprehensible information on uses and conditions of use that allow registrants to carry out a chemical safety assessments
- They help registrants to prepare more realistic chemical safety assessments for their REACH registrations
- Benefit to downstream communication: more realistic exposure scenarios help to give better safe use information to the customers.

Next steps

DU sectors:

- populate/update as soon as possible your use maps

Registrants:

- ask your DU for this structured information

All stakeholders:

- reflect on the most relevant communication channels to benefit from use maps for the 2018 registrations, and updates

ECHA:

- make available use maps from sectors on ECHA's webpage:
<http://echa.europa.eu/csr-es-roadmap/use-maps>

In the meantime, a Cefic table of associations gives an overview table that can help

Thank you



Dr. Erika Kunz
Global Product Stewardship
Global Registration and Evaluation of Chemicals
05.04.2016

what is precious to you?