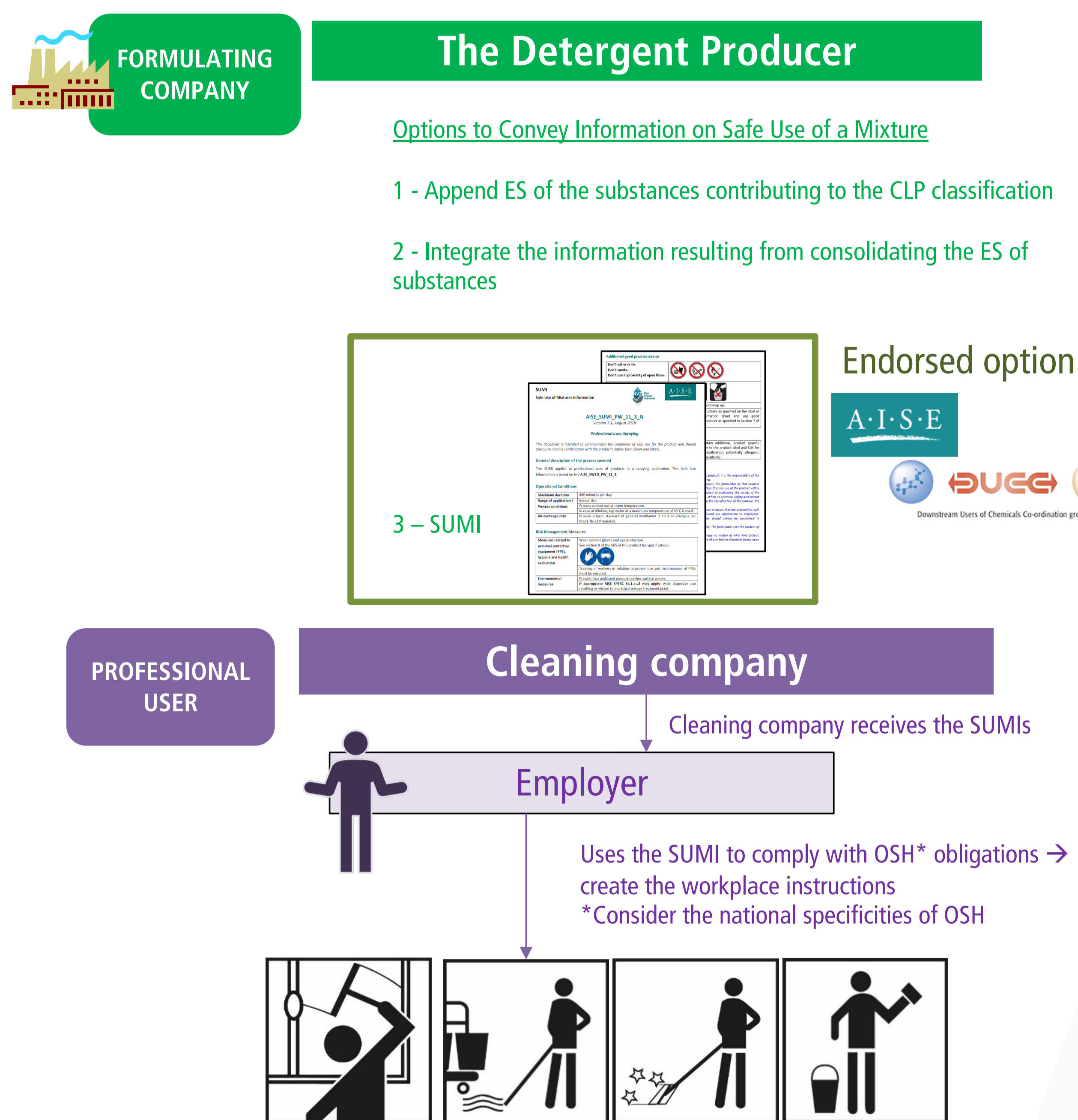
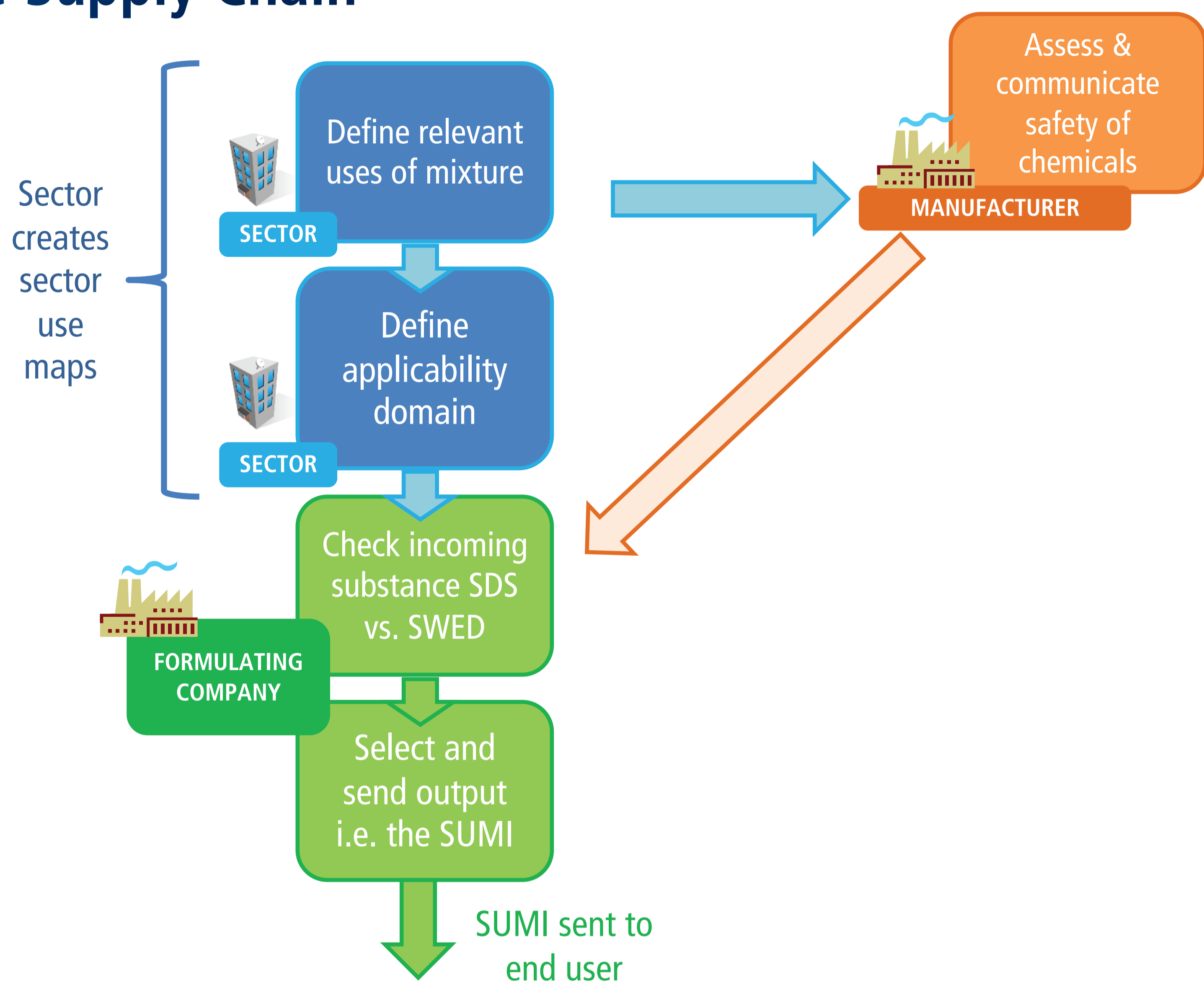


# PROFESSIONAL USERS AND SAFE USE MIXTURE INFORMATION (SUMIS)

GIULIA SEBASTIO - ENES 12 WORKSHOP



## The Supply Chain



## Using the SUMIs

### EXAMPLE for Detergents:

- Assess which uses the manufacturer of the cleaning product has foreseen (see Section 1.2 of the SDS) and determine which of these will be applied by the worker.
- For each use application relevant for the worker, collect the related SUMI documents.
- Check which operational conditions and risk management measures are relevant for safe use of the product (type of use, duration, ventilation, use of personal protective use and maintenance of PPE, etc.)
- Ensure that the operational conditions are applicable for the location where the product will be used (e.g. an office building).
- Ensure that the correct personal protective equipment is given to the worker (see section 8 of the SDS for specifications (e.g. material) of personal protective equipment).
- Check which other information is relevant for the worker, e.g. on transport and storage (Section 7 and 14 of the SDS) and regarding first aid/accidents (Sections 4, 5 and 6 of the SDS)
- Consider which other workplace instructions following OSH legislation are relevant for the worker.

**Employer**

Using product (neat) to remove limestone indoor

**Section 1.2: Brushing by hand with undiluted product PROC19, AISE\_SWED\_PW\_19\_2**

Operational Conditions	
Maximum duration	480 minutes per day.
Range of application / Process conditions	Indoor Use. Process carried out at room temperature.
Air exchange rate	In case of dilution, tap water at a maximum temperature of 45°C is used. Provide a basic standard of general ventilation (1 to 3 air changes per hour). No LEV required.

Risk Management Measures	
Measures related to personal protective equipment (PPE), hygiene and health evaluation	Wear suitable gloves and eye protection. See section 8 of the SDS of this product for specifications. Training of workers in relation to proper use and maintenance of PPE must be ensured.
Environmental measures	Prevent that undiluted product reaches surface waters. If appropriate, AISE SWED No. 2.3.4.2 may apply: waste dispersive use resulting in release to municipal sewage treatment plant.

- 480 mins
- Indoor use ✓
- No LEV
- Gloves and goggles



Using product (neat) to remove limestone indoor



## SUMIs – An Industry Wide Initiative

